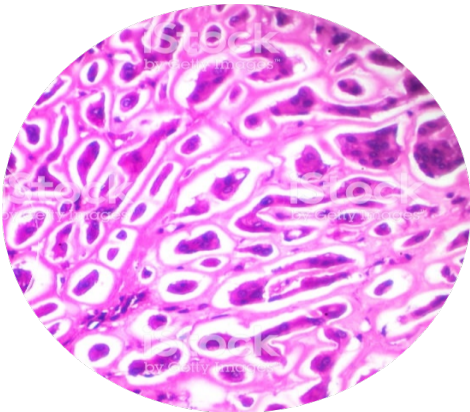
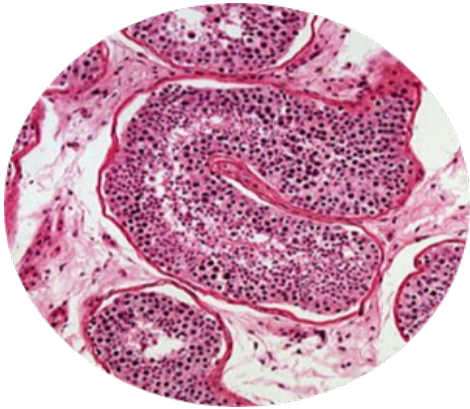
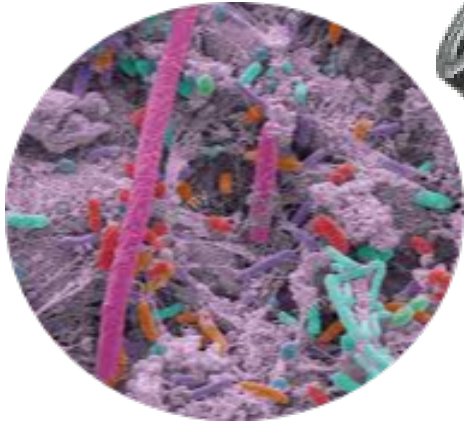


RAYSCOPE

RYS-700

Premia



Premia



SPECIFICATIONS

Optical System	High Contrast finite colour corrected Optical System
Magnification	40x to 1000x visual magnification
Stand	Aluminum die-cast stand with hand rests for enhanced comfort and stability
Observation Head	Siedentopf Binocular or Trinocular head, 30° inclined, 360° rotatable, Interpupillary distance 50 - 75mm, with dual diopter adjustment
Eye-pieces	Widefield 10x/20mm, anti-fungal & anti-reflection hard coated
Nose-piece	Reverse angle quadruple nosepiece (Ball bearing type) with precise click stops
Objectives	IOX series high contrast flat field DIN PLAN Achromatic objectives 4X,10X,40X (Spring loaded),100X (spring loaded,oil).Antifungal,antiard coated.reflection,H
Mechanical Stage	Rackless X Axis, Double plate stage size 190x140mm, X/Y travel range 90mm x 65mm. Low drive right hand movement controls. Hard coated surface for scratch resistance. Double specimen holder clip
Condenser	Sub-stage Abbe condenser NA 1.25. Iris diaphragm with Frosted white/blue filter, anti-fungal & anti-reflection hard coated. Rack and pinion movements on stainless steel guides
Focusing Control	Co-axial coarse and fine focusing on gear systems for smooth operation. Fine adjustment 0.2mm/rotation with maximum 2 micron scale increment
Illumination	Halogen 6V-20W or LED 3W illumination with variable illumination control. Up to 2,000 hours of Halogen lamp life and 100,000 hours of LED life
Electronics	Universal input 100V - 240V AC, 50/60Hz. Built in voltage stabilizer
Package Contents	Power Cable (5ft), Immersion Oil, Spare bulb (In halogen only), Nylon Dust Cover & Cleaning Cloth, Styrofoam Casing
Accessories (Optional)	Pointers & Micrometer Reticules, Infinity Corrected Optics, Phase-contrast, Polarizing, Fluorescence and Dark Field Kits, Quintuple nose -piece, Application Specific Objectives and Eyepieces, Digital Cameras (1.3, 3MP, 5MP, 9MP, 10MP, 14 MP) and Adapters, Battery backup upto 6-7 Hours,Wooden Box
Dimension	342.9 x 254 x 419.10 mm
Weight	6.60 kgs.