

REMI Bacteriological Incubators HCI Series available in two variants- **Base** and **Ultra**, are meticulously engineered to provide a stable and controlled environment for bacterial culture growth, essential in microbiological and biological laboratories. It combines advanced technology with robust construction to ensure reliability, accuracy, and longevity. It is designed for optimal growth conditions, ideal for bacterial culture incubation.



HCI 460

Durable exterior of epoxy powder coated GI sheet

protects from corrosion & ensures the incubator withstands harsh laboratory environments while maintaining its aesthetic appeal.

Inner chamber of High Grade Stainless Steel (SS304),

ensures a contamination free environment, essential for sensitive microbiological work.

Toughened Insulated Glass Door for easy monitoring of the samples The glass is double glazed for enhanced insulation and durability, ensuring that the internal environment remains stable.

Adjustable Stainless Steel wired shelves are provided, allowing customization of the internal space to accommodate various sizes of culture vessels and laboratory equipment. The shelves are easy to remove and clean, facilitating proper maintenance.

CFC Free PUF insulation and energy efficient design reduce operational costs.

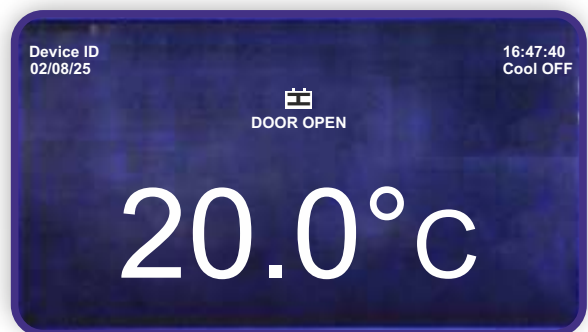
Forced air circulation system ensures superior temperature uniformity throughout the chamber, which is especially critical for sensitive samples

Audio-Visual Alarms

- Temperature Variation
- Door Open
- Power Failure (Ultra Models)
- Sensor Failure

Additional Features of Ultra Variant

- **LCD Display:** Clear, user-friendly display for monitoring and control.
- **In-Built Data Logging:** Automatically records temperature data, date, time, alarm events for compliance and analysis.
- **Temperature Records: Displays** records of the past 24 hours along with alarm events on the LCD screen.
- **RS 232 Port:** Enables connectivity with a PC for realtime monitoring and data transfer.
- **Countdown Timer with Alarm:** Allows precise timing of experiments. The alarm system notifies the user when the set time is achieved, but the incubator continues to operate to maintain sample conditions.



Technical Specifications

| Particulars | HCI 200 | HCI 200 Ultra | HCI 300 | HCI 300 Ultra | HCI 350 | HCI 350 Ultra | HCI 460 | HCI 460 Ultra |
|------------------------------------|---|---------------|--------------|---------------|--------------|---------------|--------------|---------------|
| Display | LED | 4" LCD | LED | 4" LCD | LED | 4" LCD | LED | 4" LCD |
| Internal Volume (Liters) | 200 | | 300 | | 350 | | 460 | |
| No. of trays | 2 | | 3 | | 4 | | 5 | |
| Internal Dimensions W x D x H (mm) | 420x445x1118 | | 500x500x1254 | | 500x500x1504 | | 560x570x1560 | |
| External Dimensions W x D x H (mm) | 500x726x1660 | | 585x781x1792 | | 583x781x2053 | | 640x851x2135 | |
| Temperature Range & Accuracy | 5°C to 60°C, ± 0.5°C | | | | | | | |
| Temperature Control | Microprocessor with PT-100 sensor | | | | | | | |
| Temperature Variation Alarm | Set Temperature ± 2°C, Audio Visual Alarm | | | | | | | |
| Illumination | LED Strip | | | | | | | |
| Internal Body Material | Stainless Steel - 304 grade | | | | | | | |
| External Body Material | GI Sheet epoxy powder coated | | | | | | | |
| Insulation | Up to 50 mm, CFC free polyurethane foam | | | | | | | |
| Noise Level | Less Than 60 dB(A) | | | | | | | |
| Recommended Voltage Stabilizer | Inbuilt | | | | | | Inbuilt | |

Supply: 220-240, 50Hz Single Phase